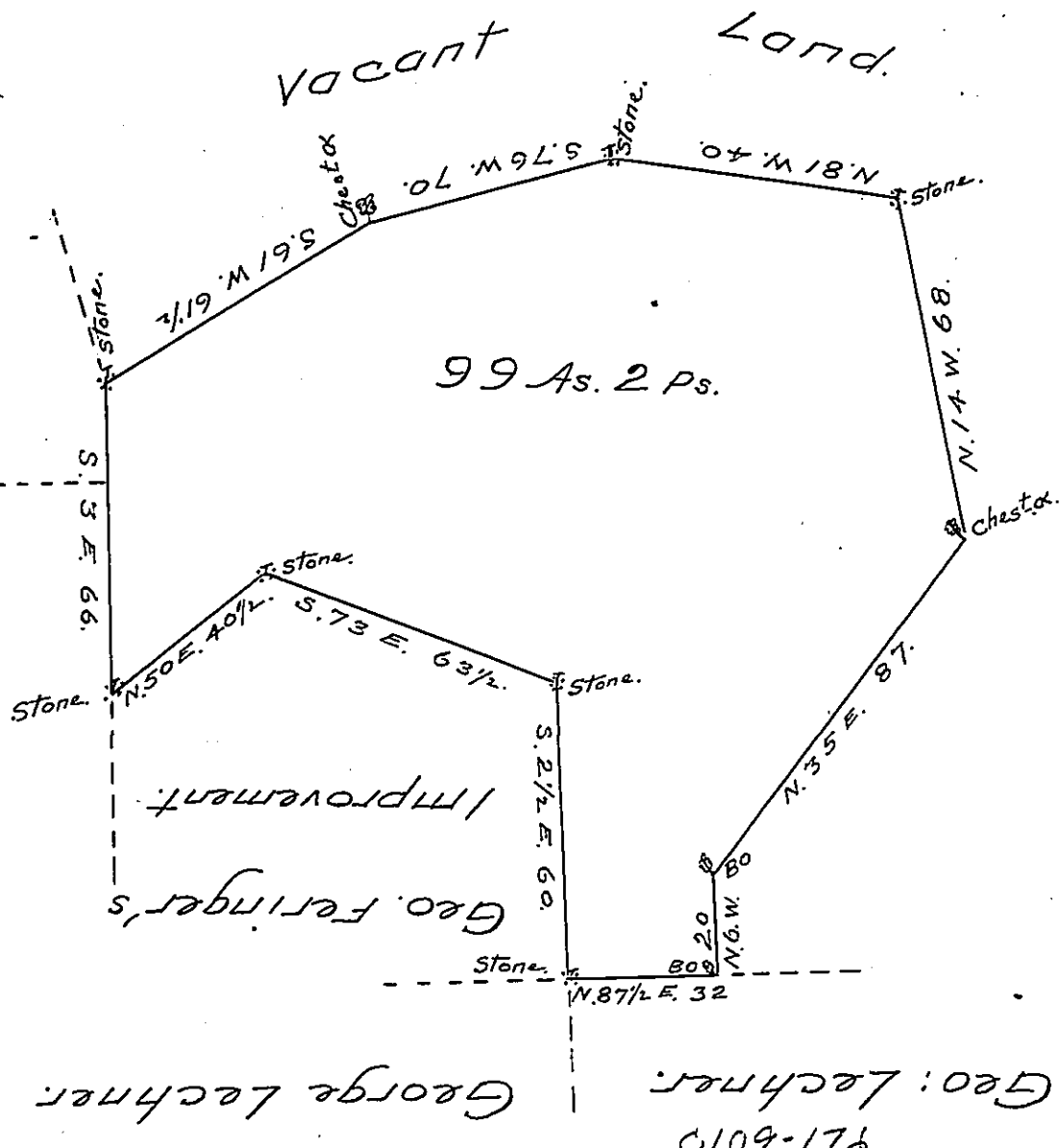


C-62-242  
C-108-205  
Geo. Ege Esqr  
Groff & Deck.



The Great Nobles  
A-19-197  
D-41-9

By Virtue of a Warrant dated the 8<sup>th</sup> day of October 1792 Surveyed the 18<sup>th</sup> day of January 1793 to George Michael Groff, the above Described Tract of Land - Situate in Bethel Township in the County of Berks - Containing Ninety Nine Acres and 2 Perches and the Allowance of Six  $\frac{1}{2}$  Cent for Roads &c

To Daniel Broadhead Esqr }  
SurE. Genl. of Pennsylvania. } Jm<sup>o</sup>. Weidman D.S.

IN TESTIMONY that the above is a copy of the original remaining on file in the Department of Internal Affairs of Pennsylvania, made conformably to an Act of Assembly approved the 16th day of February, 1833, I have hereunto set my Hand and caused the Seal of said Department to be affixed at Harrisburg, this Twenty second day of December 1904.

*Isaac R. Johnson*  
Secretary of Internal Affairs.